



Please write clearly in block capitals.

Centre number

--	--	--	--	--

Candidate number

--	--	--	--

Surname

Forename(s)

Candidate signature

I declare this is my own work.

A-level

DESIGN AND TECHNOLOGY: FASHION AND TEXTILES

Paper 2 Designing and Making Principles

Wednesday 12 June 2024

Morning

Time allowed: 1 hour 30 minutes

Materials

For this paper you must have:

- normal writing and drawing instruments
- a scientific calculator.

Instructions

- Use black ink or black ball-point pen. Use pencil only for drawing.
- Fill in the boxes at the top of this page.
- Answer **all** questions.
- You must answer the questions in the spaces provided. Do not write outside the box around each page or on blank pages.
- If you need extra space for your answer(s), use the lined pages at the end of this book. Write the question number against your answer(s).
- Do all rough work in this book. Cross through any work you do not want to be marked.

Information

- The marks for questions are shown in brackets.
- The maximum mark for this paper is 80.
- There are 30 marks for **Section A** and 50 marks for **Section B**.

For Examiner's Use	
Question	Mark
1	
2	
3	
4–5	
6–7	
8	
9	
10	
11	
12	
13	
TOTAL	



J U N 2 4 7 5 6 2 2 0 1

G/KL/Jun24/G4001/V5

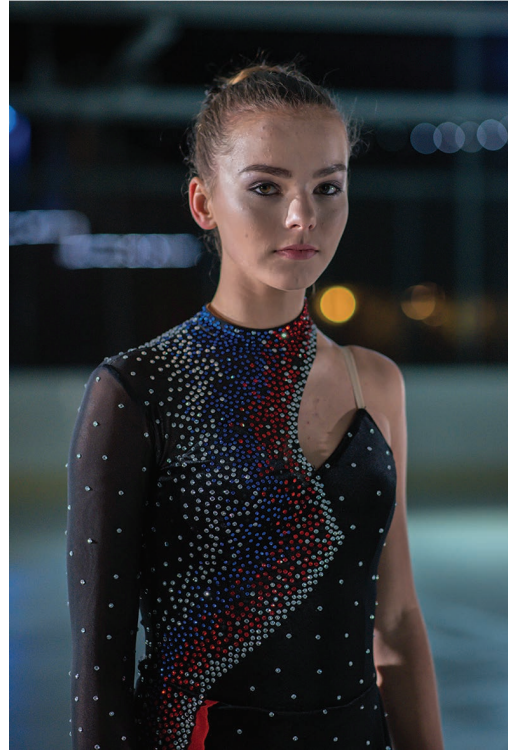
7562/2

Section A – Product Analysis

Answer **all** questions in this section.

0	1
---	---

Figure 1
Ice skater's costume



0 1 . 1

Analyse the **style** of the ice skater's costume in **Figure 1** and evaluate its suitability for this sport.

[6 marks]

0 1 . 2

The ice skater's costume in **Figure 1** is made from the following fabric:

- Fibre content: 82% polyamide/18% elastane
- Fabric structure: warp knit.

Analyse and evaluate the suitability of the fabric for the ice skater's costume in **Figure 1**.

[6 marks]

Turn over ►



*Do not write
outside the
box*

12



Turn over for the next question

*Do not write
outside the
box*

**DO NOT WRITE ON THIS PAGE
ANSWER IN THE SPACES PROVIDED**

Turn over ►



0 5

0 2

Figure 2

Children's dungarees



0 2 . 1

Dungarees were first worn as workwear in the 19th century. The dungarees in **Figure 2** are a modern version designed for children.

Analyse and evaluate how the **style** of the children's dungarees in **Figure 2** is influenced by 19th century workwear.

[6 marks]



Section B – Design and Commercial ManufactureAnswer **all** questions in this section.

0	4	.	1
---	---	---	---

 State what is meant by the term tolerance.**[1 mark]**

0	4	.	2
---	---	---	---

 Give **one** example of a specific tolerance used in the manufacture of a shirt.**[1 mark]**

0	5
---	---

 State the role of the International Organisation for Standardisation (ISO).**[1 mark]**

3

Turn over for the next question**Turn over ►**

0 6

Give **three** ways a designer can ensure that clothing for children is inclusive.

[3 marks]

1 _____

2 _____

3 _____

0 7

Outline the characteristics of Minimalism and minimalist fashion design.

[6 marks]

9



Turn over for the next question

*Do not write
outside the
box*

**DO NOT WRITE ON THIS PAGE
ANSWER IN THE SPACES PROVIDED**

Turn over ►



0 8 . 1 A batch of 750 dresses is manufactured. On inspection, 16 dresses are faulty.

Calculate the probability of randomly picking out a faulty dress from the batch.

Give your answer as a decimal to **three** decimal places.

Show your working.

[2 marks]

Answer _____

0 8 . 2

Figure 4

Not drawn to scale

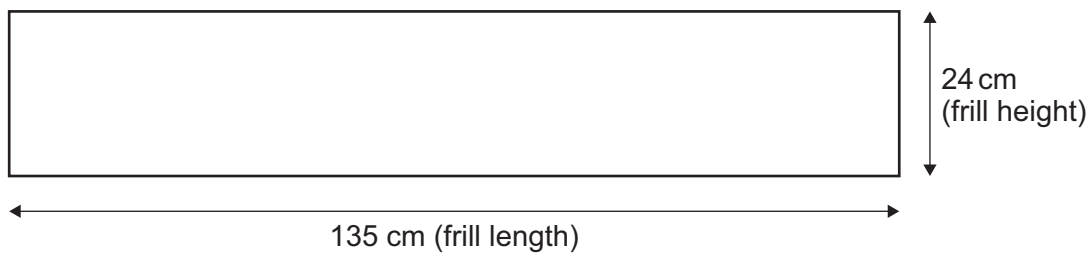


Figure 4 shows the pattern template for a frill on a size 18 dress.

The frill height is decreased from 24 cm to 20 cm for the size 10 dress.

The scaling ratio is the same for the frill height and the frill length.

Calculate the frill length for the size 10 dress to the nearest cm.

Show your working.

[3 marks]



0 8 . 3 **Table 1** shows the cost of boxes of buttons for the dress.

Table 1

	Box A	Box B	Box C
Number of buttons in a box	750	1200	1750
Cost	£180	£252	£350

The manufacturer is required to make a batch of 175 dresses.

There are 4 buttons on the back of each dress.

The manufacturer is considering including 1 extra button on the final product for home repairs.

Calculate the increase in cost per dress for including the extra button.

Give your answer to the nearest penny.

Show your working.

[3 marks]

Answer _____ p

Question 8 continues on the next page

Turn over ►



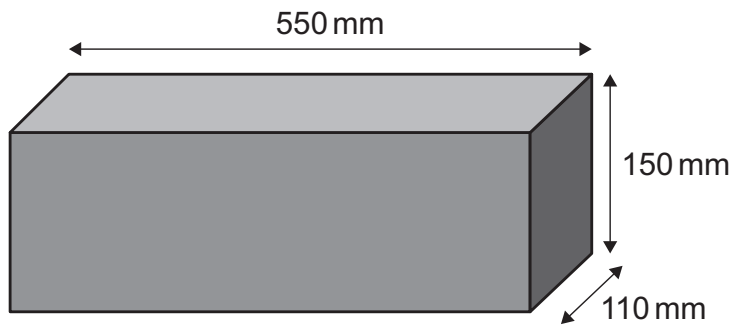
0 8 . 4 The manufacturer considers sourcing buttons from two different suppliers.

Each supplier packages the same amount of buttons in different shaped boxes, as shown in **Figure 5**.

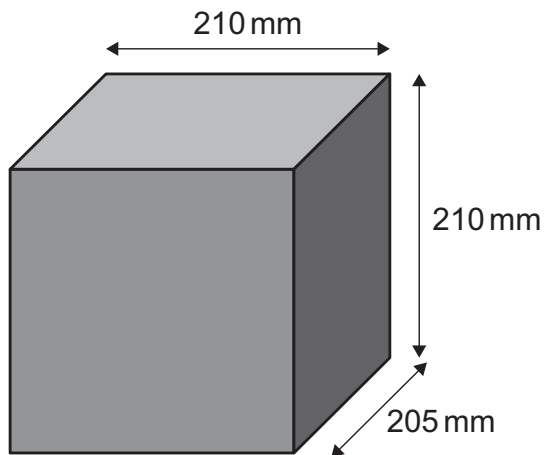
Figure 5

Dimensions of boxes from two different suppliers

Supplier A Box dimensions



Supplier B Box dimensions



Which supplier's box will take up less storage space in the warehouse?

You **must** show your working.

[2 marks]

Supplier _____

10

Turn over for the next question

Turn over ►



0	9
---	---

State **three** different ways to reduce the environmental impact of packaging for fashion and textile products.

[3 marks]

1 _____

2 _____

3 _____

3



1 1 . 1

Give **two** different ways that the **design** of fashion and textiles products can have a minimal environmental impact in a circular economy.

[2 marks]

1 _____

2 _____

1 1 . 2

Give **two** different ways that the **manufacture** of fashion and textiles products can have a minimal environmental impact in a circular economy.

[2 marks]

1 _____

2 _____

4



1 3 . 1 Define the term 'dart' **and** explain its purpose.

[3 marks]

Definition _____

Purpose _____

1 3 . 2 Define the term 'yoke' **and** explain its purpose.

[3 marks]

Definition _____

Purpose _____

6

END OF QUESTIONS



There are no questions printed on this page

*Do not write
outside the
box*

**DO NOT WRITE ON THIS PAGE
ANSWER IN THE SPACES PROVIDED**



